

# ABC Deck Cabinet Extrusion - A

ABC's "Easy Sheet" series on building extruded aluminum sign frames - 01/01

# 16

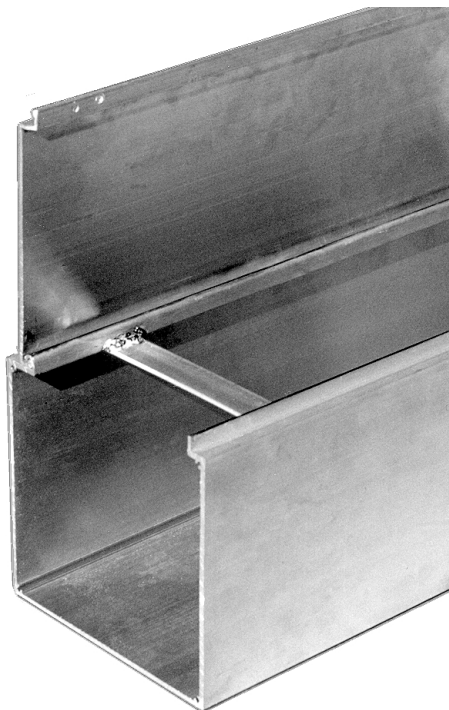
ABC's Deck Cabinet assembly saves time and money when building channel letter signs for wall or marquee mounting. Large enough to accommodate the largest transformers, the Deck Cabinet and Cover come in 20' lengths. You may also purchase the precisely machined and drilled End Plates and pre-cut Cross Straps from ABC. There is no minimum order required.

## QUICK AND EASY ASSEMBLY

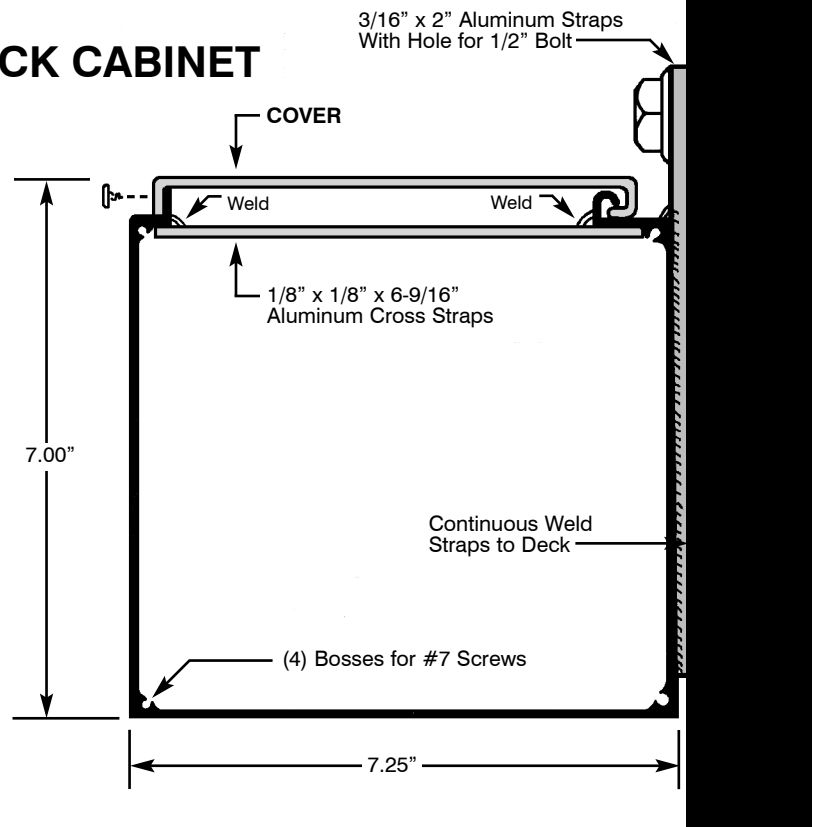
Cut the Deck Cabinet to length, cut the electrode housing holes, screw the End Plates on each end, weld the Cross Straps (as illustrated) not more than 48" apart, screw the Cover down, and it's finished.

## HELPFUL HINTS

**CROSS STRAPS:** These aluminum straps are to be 1/8" thick x 1" wide x 6-9/16" long. Make your own or buy them pre-cut from ABC. They are to be welded as illustrated under the top flanges of the Deck Cabinet.



## DECK CABINET



Their purpose is to hold the wide open mouth to its precise shape. Otherwise, when the Cover is opened for service, the heavy, cantilevered weight of the transformers and letters could spread the mouth, making it difficult to replace the screws in the Cover.

**CUTTING TO LENGTH:** After determining the length, weld the Cross Straps first, with one very close to the ends to be cut. They should be no more than 48" on center. The ends will then be easier to cut square and true. If your radial saw blade is not large enough to cut the Deck Cabinet extrusion, it may be cut with a power hack-saw, a saber-saw, or a large band-saw if it can be properly supported for cutting.

## INSTALLATION HARDWARE

ABC recommends two or more vertical straps, 1/4" x 2" wide, either steel or aluminum, long enough to extend above the top of the Deck Cabinet to make it easy to mount lag bolts into the wall. Steel should be primed and painted to prevent rust and electrolysis. If aluminum straps are used, they may be substantially welded directly to the back wall of the Deck cabinet. If steel straps are used, they should have two bolts per strap; one near the top and one near the bottom.

These external straps serve a second purpose; that of allowing water to drain behind the Deck Cabinet, which prevents dirt from collecting between the sign and the wall, thus staining the wall below the sign.

Please contact ABC if you have any questions:

2028 SE Frontage Road, Fort Collins, Colorado 80525

Toll-Free: 800-248-9889 Fax: 970-482-4019 Email: [abcsigns@abcsignproducts.com](mailto:abcsigns@abcsignproducts.com)

The parts described on this page are covered by one or more of the following patents:

U.S. 4,007,552 4,265,039  
CANADIAN 1,021,565 1,149,159 1,170,048 1,170,049 1,170,050



# ABC Deck Cabinet Extrusion (cont.)

ABC's "Easy Sheet" series on building extruded aluminum sign frames - 01/01

Alternatively, the Deck Cabinet may be bolted directly to the wall with bolts and large washers through the back wall of the Deck Cabinet. In this case, we suggest the top of the Deck Cabinet be caulked at the wall to prevent dirt stains below the sign.

## ELECTRODE HOUSING HOLES

These may be cut with hole-saws, fly-cutters in a drill press, or perhaps are best cut with a hole template clamped or taped to the extrusion and cut with a hand-held router.

## U.L. REQUIREMENTS

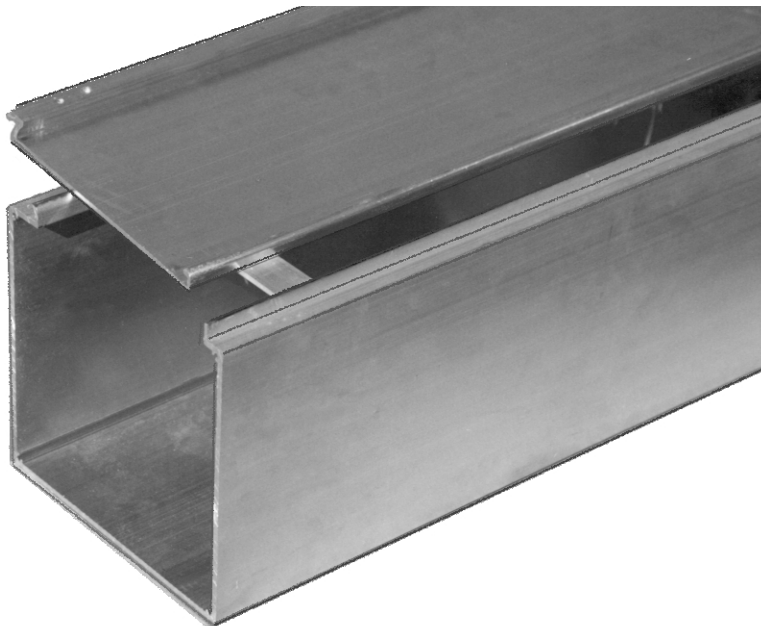
ABC recommends that U.L. 48 standard be referred to for proper transformer mounting, clearance from current carrying part to ground, water drainage, etc.

Drainage holes are required in the bottom. If there should be a problem of clearance to ground on special transformers, insulation can be provided by mounting sheet Mica of sufficient size to the Deck cabinet sides, or the Cover.

Alternatively, a special sheet metal "hat section" cover can be fabricated to use instead of ABC's extruded Cover.



**SEE THE FOLLOWING PAGES FOR THREE MORE ABC WIREWAYS, AND CHECK EASY SHEET 'E' IN THE AWNING SECTION OF THE CATALOG FOR AWNING LIGHTING**



## MOUNTING THE END-PLATES

These aluminum plates are precisely cut by ABC's CAD/CAM machines, including the four screw holes to fit the corresponding screw bosses in the ends of the Deck extrusion. The End-Plates must be made water-tight by means of a neoprene gasket or silicone caulking. NOTE: The Cover is to be cut so that it extends over the end Plates slightly, to provide flashing on the ends.

## MOUNTING AND OPENING THE COVER

The Cover was designed to lock under the rear lip of the Deck Cabinet, and to be screwed down on the front side only. This eliminates drilling and mounting screws on the back side, where they would be difficult to see and reach, once the sign is installed.

To open the Cover for service, remove the front screws, lift the Cover a bit, pull it forward, and it will then easily open without disengaging it at the rear. However, if removal is preferred, lift it slightly, push it back, and it is then free to remove.

**ABC TURNS EXPERIENCE INTO TECHNOLOGY, TO SAVE YOU TIME AND MONEY!**